

Buy EUR 26.50 (EUR 27.00) Price EUR 15.90 Upside 66.7 %	Value Indicators: EUR DCF: 26.50 FCF-Value Potential 26e: 18.00	Warburg ESG Risk Score: 1.4 ESG Score (MSCI based): 3.0 Balance Sheet Score: 0.8 Market Liquidity Score: 0.5	Description: Leading supplier of specialty adhesives, UV/ IR radiation systems and UV specialty lamps
	Market Snapshot: EUR m Market cap: 96.4 No. of shares (m): 6.1 EV: 143.9 Freefloat MC: 71.7 Ø Trad. Vol. (30d): 33.43 th	Shareholders: Freefloat 74.40 % Peter Möhrle Holding 25.60 % <i>Teslin / Gerlin</i> 6.40 % <i>Lazard</i> 3.90 % <i>Quaero Capital</i> 3.20 %	Key Figures (WRE): 2023/24e Beta: 1.3 Price / Book: 1.0 x Equity Ratio: 57 % Net Fin. Debt / EBITDA: 7.3 x Net Debt / EBITDA: 7.8 x

Balanced Q3 EBIT in line with estimate; Turnaround still expected next year

Stated Figures Q3/2023/24:										Comment on Figures:	
FY End: 30.9. in EUR m	Q3 23/24	Q3 23/24e	Q3 22/23	yoy	9M 23/24	9M 23/24e	9M 22/23	yoy			
Sales	23.9	24.7	26.2	-9 %	72.1	72.8	79.7	-10 %			Revenues slightly below estimates. As in H1, revenues were down ~10% yoy. The decline was mainly registered in the Systems and Lamps businesses.
EBIT	0.0	0.0	-10.5	n.a.	-0.1	-0.1	-6.8	n.a.			Q3 2023 was affected by significant one-offs (write-downs on Steriwhite)
Margin	0.0 %	-0.1 %	-40.1 %		-0.2 %	-0.2 %	-8.5 %				A balanced EBIT is in line with the forecasts.

Hönle released its Q3 results on Wednesday, 7 August.

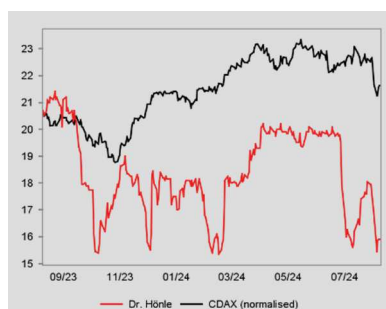
Revenues of just under EUR 24m were slightly below expectations and at the relatively low level already reached in Q1/2. The balanced EBIT was in line with expectations. This year's weak top-line development reflects the weak demand, especially in the Systems business and from printing customers. Only the Adhesives business showed a flat development after 9M. The yoy drop in profitability (9M EBIT was EUR 5m last year excl. negative one-offs) is due to the typically high operating leverage with gross margins of >60%.

Hönle reiterated its guidance for sales of EUR 100m and a positive EBIT in FY 2024. After the top-line shortfall in Q3, we now assume that a slight demand recovery in Q4 will lead to annual revenues of ~EUR 98m, which should facilitate the achievement of a very slightly positive EBIT.

The expectation of a return to higher growth in the coming FY remains unchanged. In the next FY, Hönle should benefit from a recovery of the currently low demand in the Equipment business and the expectation of proportionately higher growth in Adhesives, driven by photovoltaic and EV-related applications, where projects have been postponed. In the medium term, growth should be driven by a more focused positioning as a solutions provider, better exploitation of opportunities in the fast-growing market for specialty adhesives (focus areas are e.g. electronics packaging, medical devices) and by proportionately higher sales contributions from markets abroad. In the UV-lamps business, disinfection applications are expected to be the main driver, where Hönle can offer its customers full-service solutions.

The somewhat reduced estimates lead to a new PT of EUR 26.50 (was EUR 27). The Buy rating remains unchanged based on the expected return to better operating development under the new management team (Robert Stark was appointed CFO with effect from 1 October).

Changes in Estimates:							Comment on Changes:	
FY End: 30.9. in EUR m	2023/24e (old)	+ / -	2024/25e (old)	+ / -	2025/26e (old)	+ / -		
Sales	100.2	-2.4 %	113.0	-1.8 %	n.a.	n.m.		Proportionally stronger reduction of earnings forecasts due to base effects
EBIT	0.9	-73.6 %	7.9	-15.2 %	n.a.	n.m.		Double-digit growth expected in the next FYs

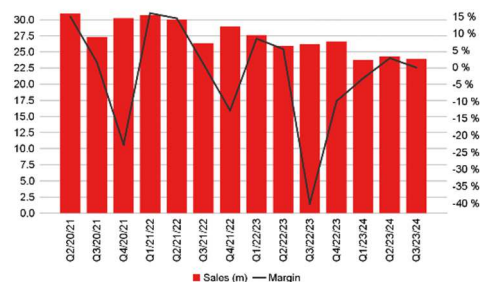


Rel. Performance vs CDAX:	
1 month:	4.9 %
6 months:	2.2 %
Year to date:	-10.2 %
Trailing 12 months:	-24.4 %

Company events:
06.12.24 Prel. FY 2023/24

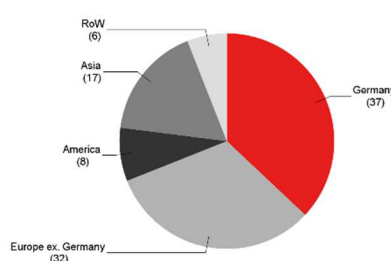
FY End: 30.9. in EUR m	CAGR (22/23-25/26e)	2019/20	2020/21	2021/22	2022/23	2023/24e	2024/25e	2025/26e
Sales	4.7 %	93.9	115.2	116.1	106.3	97.8	111.0	122.1
Change Sales yoy		-12.9 %	22.7 %	0.8 %	-8.4 %	-8.0 %	13.5 %	10.0 %
Gross profit margin		64.5 %	60.2 %	54.6 %	50.2 %	61.2 %	62.3 %	63.0 %
EBITDA	253.4 %	14.7	13.8	12.1	0.4	6.1	13.1	17.6
EBIT		8.1	0.3	5.8	-9.4	0.2	6.7	11.0
EBIT adj.		8.1	7.8	11.7	7.1	0.2	6.7	11.0
Margin		8.6 %	6.8 %	10.1 %	6.6 %	0.2 %	6.0 %	9.0 %
Net income		5.8	-4.9	-13.4	-11.1	-1.3	3.5	6.7
EPS		1.01	-0.81	-2.20	-1.84	-0.22	0.58	1.11
EPS adj.	8.0 %	1.01	0.45	-1.23	0.88	-0.22	0.58	1.11
DPS		0.50	0.20	0.00	0.00	0.15	0.30	0.50
Dividend Yield		1.1 %	0.4 %	n.a.	n.a.	0.9 %	1.9 %	3.1 %
FCFPS		-4.00	-2.67	-3.31	0.03	0.52	0.55	1.29
FCF / Market cap		-9.0 %	-5.3 %	-10.9 %	0.2 %	3.3 %	3.5 %	8.1 %
EV / Sales		2.9 x	3.1 x	2.1 x	1.6 x	1.5 x	1.3 x	1.1 x
EV / EBITDA		18.6 x	25.6 x	19.8 x	426.3 x	23.6 x	10.8 x	7.7 x
EV / EBIT		33.7 x	n.a.	41.1 x	n.a.	613.1 x	21.1 x	12.3 x
P / E		43.8 x	n.a.	n.a.	n.a.	n.a.	27.4 x	14.3 x
P / E adj.		43.8 x	111.1 x	n.a.	22.3 x	n.a.	27.4 x	14.3 x
FCF Potential Yield		3.6 %	1.9 %	-0.2 %	-2.3 %	2.5 %	6.0 %	8.7 %
Net Debt		20.9	50.1	56.3	50.7	47.6	45.1	39.1
ROCE (NOPAT)		4.9 %	1.4 %	2.3 %	n.a.	0.1 %	3.3 %	5.5 %
Guidance:		2024: Sales EUR 100m; EBIT positive						

Sales development
in EUR m



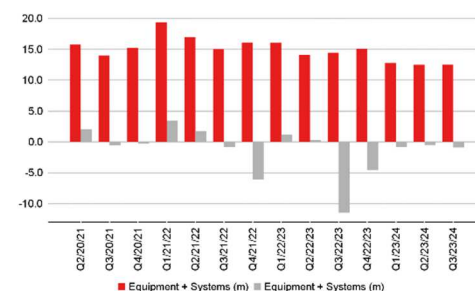
Source: Warburg Research

Sales by regions
2023; in %



Source: Warburg Research

Development Equipment + Systems
Sales and EBIT in EUR m



Source: Warburg Research

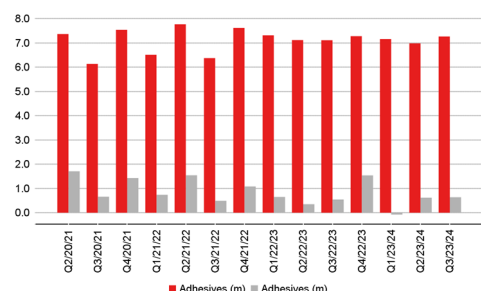
Company Background

- With sales of more than EUR 130m, Dr. Hönle is active in the areas of UV/IR Systems, specialty adhesives, quartz glass products and IR lamps. The company employs > 600 people.
- The company's activities were clearly expanded partly by acquisitions, which strengthened the core business as well as ancillary areas like (UV) adhesives or quartz glass.
- UV technology is used in a wide number of industrial applications. The most important areas of application are paint and lacquer drying, adhesives, and coating and laminating procedures.
- Meanwhile a good one-third of revenues are generated with specialty adhesives, which are predominantly used in the electronics industry.
- The customer structure is largely fragmented with the exception of a few larger customers. The top 5 customers account for roughly 20% of group sales.

Competitive Quality

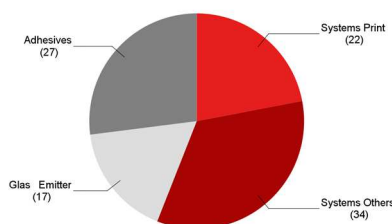
- The competitive structure is characterised by a high number of smaller mainly regionally-active suppliers and just a handful of larger companies.
- Competitors of a comparable size normally serve only part of the market segments, resulting in a comparatively moderate competitive intensity within the individual segments.
- Established customer relationships present a significant barrier to market entry. UV components seldom account for more than 5-10% of the material costs, which lowers customers' motivation to switch supplier.
- With high vertical integration, Dr. Hönle generates a large part of the value creation in the company.
- This allows the company to achieve higher margins and higher cash flows. The strong competitive quality is expressed in an ROCE of >15%.

Development Adhesives
Sales and EBIT in EUR m



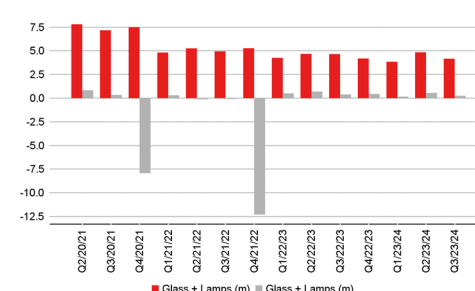
Source: Warburg Research

Sales by segments
2023; in %



Source: Warburg Research

Development Glass + Lamps
Sales and EBIT in EUR m



Source: Warburg Research

DCF model

Figures in EUR m	Detailed forecast period			Transitional period										Term. Value
	23/24e	24/25e	25/26e	26/27e	27/28e	28/29e	29/30e	30/31e	31/32e	32/33e	33/34e	34/35e	35/36e	
Sales	97.8	111.0	122.1	131.9	141.1	149.6	157.1	164.9	173.1	180.1	187.3	194.8	198.2	
Sales change	-8.0 %	13.5 %	10.0 %	8.0 %	7.0 %	6.0 %	5.0 %	5.0 %	5.0 %	4.0 %	4.0 %	4.0 %	1.8 %	1.8 %
EBIT	0.2	6.7	11.0	15.2	18.3	19.4	20.4	21.4	22.5	23.4	24.3	25.3	25.8	
EBIT-margin	0.2 %	6.0 %	9.0 %	11.5 %	13.0 %	13.0 %	13.0 %	13.0 %	13.0 %	13.0 %	13.0 %	13.0 %	13.0 %	
Tax rate (EBT)	29.0 %	29.0 %	29.0 %	29.5 %	29.5 %	29.5 %	29.5 %	29.5 %	29.5 %	29.5 %	29.5 %	29.5 %	29.5 %	
NOPAT	0.2	4.8	7.8	10.7	12.9	13.7	14.4	15.1	15.9	16.5	17.2	17.9	18.2	
Depreciation	5.9	6.4	6.6	7.9	8.1	6.4	6.8	6.9	7.1	7.2	7.1	7.1	6.9	
in % of Sales	6.0 %	5.7 %	5.4 %	6.0 %	5.8 %	4.3 %	4.3 %	4.2 %	4.1 %	4.0 %	3.8 %	3.7 %	3.5 %	
Changes in provisions	0.0	0.0	0.0	0.0	0.0	0.0	0.0	0.0	0.0	0.0	0.0	0.0	0.0	
Change in Liquidity from														
- Working Capital	-0.9	2.2	1.2	0.9	1.7	1.3	2.4	2.5	2.6	2.2	2.3	2.4	1.1	
- Capex	3.8	5.8	5.8	5.4	5.5	5.7	5.7	5.9	6.2	6.5	6.7	8.6	8.0	
Capex in % of Sales	3.9 %	5.2 %	4.7 %	4.1 %	3.9 %	3.8 %	3.6 %	3.6 %	3.6 %	3.6 %	3.6 %	4.4 %	4.1 %	
- Other	0.0	-1.0	-1.0	-1.0	0.0	0.0	0.0	0.0	0.0	0.0	0.0	0.0	0.0	
Free Cash Flow (WACC Model)	3.1	4.1	8.4	13.2	13.8	13.2	13.1	13.6	14.1	15.0	15.2	14.0	16.0	17
PV of FCF	3.2	3.9	7.4	10.9	10.5	9.3	8.6	8.2	7.9	7.8	7.3	6.2	6.6	113
share of PVs	6.92 %			39.46 %										53.63 %

Model parameter

Derivation of WACC:		Derivation of Beta:	
Debt ratio	27.00 %	Financial Strength	1.20
Cost of debt (after tax)	2.6 %	Liquidity (share)	1.35
Market return	8.25 %	Cyclicality	1.35
Risk free rate	2.75 %	Transparency	1.30
		Others	1.30
WACC	7.94 %	Beta	1.30

Valuation (m)

Present values 2035/36e	98		
Terminal Value	113		
Financial liabilities	57		
Pension liabilities	3		
Hybrid capital	0		
Minority interest	1		
Market val. of investments	1		
Liquidity	9	No. of shares (m)	6.1
Equity Value	161	Value per share (EUR)	26.51

Sensitivity Value per Share (EUR)

Beta	WACC	Terminal Growth							Beta	WACC	Delta EBIT-margin						
		1.00 %	1.25 %	1.50 %	1.75 %	2.00 %	2.25 %	2.50 %			-1.5 pp	-1.0 pp	-0.5 pp	+0.0 pp	+0.5 pp	+1.0 pp	+1.5 pp
1.55	8.9 %	20.10	20.52	20.97	21.46	21.98	22.54	23.14	1.55	8.9 %	17.50	18.82	20.14	21.46	22.78	24.10	25.42
1.42	8.4 %	22.14	22.66	23.20	23.79	24.43	25.12	25.86	1.42	8.4 %	19.54	20.96	22.38	23.79	25.21	26.63	28.05
1.36	8.2 %	23.28	23.84	24.45	25.10	25.81	26.57	27.40	1.36	8.2 %	20.68	22.15	23.63	25.10	26.57	28.05	29.52
1.30	7.9 %	24.49	25.12	25.79	26.51	27.30	28.15	29.09	1.30	7.9 %	21.91	23.45	24.98	26.51	28.05	29.58	31.11
1.24	7.7 %	25.80	26.49	27.24	28.05	28.92	29.88	30.94	1.24	7.7 %	23.25	24.85	26.45	28.05	29.64	31.24	32.84
1.18	7.4 %	27.22	27.98	28.81	29.71	30.70	31.78	32.97	1.18	7.4 %	24.71	26.38	28.05	29.71	31.38	33.05	34.72
1.05	6.9 %	30.41	31.36	32.40	33.54	34.80	36.19	37.74	1.05	6.9 %	28.06	29.89	31.71	33.54	35.37	37.20	39.03

- Growth and mix improvements to drive return to higher profitability
- Disproportionately high growth of adhesive segment provides further upside potential
- Sustainable EBIT margin of 15% anticipated

Free Cash Flow Value Potential

Warburg Research's valuation tool "FCF Value Potential" reflects the ability of the company to generate sustainable free cash flows. It is based on the "FCF potential" - a FCF "ex growth" figure - which assumes unchanged working capital and pure maintenance capex. A value indication is derived via the perpetuity of a given year's "FCF potential" with consideration of the weighted costs of capital. The fluctuating value indications over time add a timing element to the DCF model (our preferred valuation tool).

in EUR m	2019/20	2020/21	2021/22	2022/23	2023/24e	2024/25e	2025/26e	
Net Income before minorities	5.7	-4.9	-13.2	-10.9	-1.2	3.7	6.9	
+ Depreciation + Amortisation	6.6	13.5	6.3	9.8	5.9	6.4	6.6	
- Net Interest Income	-0.2	-1.0	-1.4	-1.6	-1.9	-1.5	-1.2	
- Maintenance Capex	2.1	2.5	2.6	3.0	3.0	3.0	3.0	
+ Other	-0.4	-0.4	7.5	-1.3	0.0	0.0	0.0	
= Free Cash Flow Potential	10.0	6.6	-0.6	-3.8	3.6	8.6	11.7	
FCF Potential Yield (on market EV)	3.6 %	1.9 %	-0.2 %	-2.3 %	2.5 %	6.0 %	8.7 %	
WACC	7.94 %	7.94 %	7.94 %	7.94 %	7.94 %	7.94 %	7.94 %	
= Enterprise Value (EV)	273.1	353.1	239.9	169.7	143.9	141.5	135.5	
= Fair Enterprise Value	125.6	83.7	n.a.	n.a.	45.2	107.8	147.8	
- Net Debt (Cash)	47.5	47.5	47.5	47.5	44.3	41.9	35.9	
- Pension Liabilities	3.2	3.2	3.2	3.2	3.2	3.2	3.2	
- Other	0.0	0.0	0.0	0.0	0.0	0.0	0.0	
- Market value of minorities	0.0	0.0	0.0	0.0	0.0	0.0	0.0	
+ Market value of investments	0.0	0.0	0.0	0.0	0.0	0.0	0.0	
= Fair Market Capitalisation	74.9	33.0	n.a.	n.a.	n.a.	62.7	108.7	
Number of shares, average	5.7	6.1	6.1	6.1	6.1	6.1	6.1	
= Fair value per share (EUR)	13.15	5.44	n.a.	n.a.	n.a.	10.34	17.93	
premium (-) / discount (+) in %						-35.0 %	12.8 %	
Sensitivity Fair value per Share (EUR)								
	10.94 %	6.67	1.65	n.a.	n.a.	n.a.	5.46	11.24
	9.94 %	8.18	2.66	n.a.	n.a.	n.a.	6.76	13.02
	8.94 %	10.03	3.89	n.a.	n.a.	n.a.	8.35	15.20
WACC	7.94 %	13.15	5.44	n.a.	n.a.	n.a.	10.34	17.93
	6.94 %	15.34	7.43	n.a.	n.a.	0.68	12.90	21.45
	5.94 %	19.33	10.09	n.a.	n.a.	2.11	16.33	26.15
	4.94 %	24.95	13.83	n.a.	n.a.	4.13	21.15	32.75

▪ Rising value indication triggered by margin expansion

Valuation	2019/20	2020/21	2021/22	2022/23	2023/24e	2024/25e	2025/26e
Price / Book	2.2 x	2.7 x	1.7 x	1.2 x	1.0 x	1.0 x	0.9 x
Book value per share ex intangibles	15.72	14.30	13.80	12.56	12.38	12.85	13.71
EV / Sales	2.9 x	3.1 x	2.1 x	1.6 x	1.5 x	1.3 x	1.1 x
EV / EBITDA	18.6 x	25.6 x	19.8 x	426.3 x	23.6 x	10.8 x	7.7 x
EV / EBIT	33.7 x	n.a.	41.1 x	n.a.	613.1 x	21.1 x	12.3 x
EV / EBIT adj.*	33.7 x	45.2 x	20.4 x	24.0 x	613.1 x	21.1 x	12.3 x
P / FCF	n.a.	n.a.	n.a.	580.3 x	30.7 x	28.7 x	12.3 x
P / E	43.8 x	n.a.	n.a.	n.a.	n.a.	27.4 x	14.3 x
P / E adj.*	43.8 x	111.1 x	n.a.	22.3 x	n.a.	27.4 x	14.3 x
Dividend Yield	1.1 %	0.4 %	n.a.	n.a.	0.9 %	1.9 %	3.1 %
FCF Potential Yield (on market EV)	3.6 %	1.9 %	-0.2 %	-2.3 %	2.5 %	6.0 %	8.7 %

*Adjustments made for: -

Company Specific Items	2019/20	2020/21	2021/22	2022/23	2023/24e	2024/25e	2025/26e
Adj. FCFPS	-0.66	-0.19	-0.83	2.51	2.99	3.03	3.76

Consolidated profit & loss

In EUR m	2019/20	2020/21	2021/22	2022/23	2023/24e	2024/25e	2025/26e
Sales	93.9	115.2	116.1	106.3	97.8	111.0	122.1
Change Sales yoy	-12.9 %	22.7 %	0.8 %	-8.4 %	-8.0 %	13.5 %	10.0 %
Increase / decrease in inventory	-0.6	3.1	1.7	-1.9	0.2	0.0	0.0
Own work capitalised	0.0	0.0	0.4	0.1	0.1	0.1	0.1
Total Sales	93.3	118.3	118.2	104.5	98.1	111.1	122.2
Material expenses	32.7	48.9	54.8	51.1	38.2	42.0	45.2
Gross profit	60.5	69.3	63.4	53.3	59.9	69.1	77.0
<i>Gross profit margin</i>	<i>64.5 %</i>	<i>60.2 %</i>	<i>54.6 %</i>	<i>50.2 %</i>	<i>61.2 %</i>	<i>62.3 %</i>	<i>63.0 %</i>
Personnel expenses	33.2	39.7	39.7	39.5	40.1	41.6	44.2
Other operating income	1.2	1.6	3.6	3.3	2.1	2.1	2.0
Other operating expenses	13.8	17.5	15.2	16.7	15.7	16.5	17.2
Unfrequent items	0.0	0.0	0.0	0.0	0.0	0.0	0.0
EBITDA	14.7	13.8	12.1	0.4	6.1	13.1	17.6
<i>Margin</i>	<i>15.7 %</i>	<i>12.0 %</i>	<i>10.4 %</i>	<i>0.4 %</i>	<i>6.2 %</i>	<i>11.8 %</i>	<i>14.4 %</i>
Depreciation of fixed assets	6.0	9.0	5.6	5.4	5.3	5.8	6.0
EBITA	8.7	4.8	6.6	-5.0	0.8	7.3	11.6
Amortisation of intangible assets	0.6	1.1	0.7	1.8	0.6	0.6	0.6
Goodwill amortisation	0.0	3.4	0.0	2.6	0.0	0.0	0.0
EBIT	8.1	0.3	5.8	-9.4	0.2	6.7	11.0
<i>Margin</i>	<i>8.6 %</i>	<i>0.3 %</i>	<i>5.0 %</i>	<i>-8.9 %</i>	<i>0.2 %</i>	<i>6.0 %</i>	<i>9.0 %</i>
EBIT adj.	8.1	7.8	11.7	7.1	0.2	6.7	11.0
Interest income	0.2	0.1	0.1	0.2	0.0	0.0	0.0
Interest expenses	0.5	1.1	1.5	1.8	1.9	1.5	1.2
Other financial income (loss)	0.1	0.0	0.0	0.1	0.0	0.0	0.0
EBT	7.9	-0.7	4.4	-11.0	-1.7	5.2	9.8
<i>Margin</i>	<i>8.5 %</i>	<i>-0.6 %</i>	<i>3.8 %</i>	<i>-10.3 %</i>	<i>-1.7 %</i>	<i>4.7 %</i>	<i>8.0 %</i>
Total taxes	2.2	4.3	1.6	0.3	-0.5	1.5	2.8
Net income from continuing operations	5.7	-4.9	2.8	-11.3	-1.2	3.7	6.9
Income from discontinued operations (net of tax)	0.0	0.0	-16.0	0.3	0.0	0.0	0.0
Net income before minorities	5.7	-4.9	-13.2	-10.9	-1.2	3.7	6.9
Minority interest	-0.1	0.0	0.2	0.2	0.2	0.2	0.2
Net income	5.8	-4.9	-13.4	-11.1	-1.3	3.5	6.7
<i>Margin</i>	<i>6.2 %</i>	<i>-4.2 %</i>	<i>-11.5 %</i>	<i>-10.5 %</i>	<i>-1.4 %</i>	<i>3.1 %</i>	<i>5.5 %</i>
Number of shares, average	5.7	6.1	6.1	6.1	6.1	6.1	6.1
EPS	1.01	-0.81	-2.20	-1.84	-0.22	0.58	1.11
EPS diluted	0.95	-0.81	-2.20	-1.84	-0.22	0.58	1.11

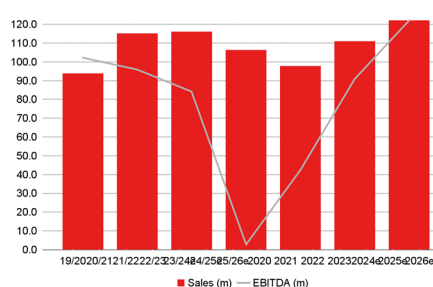
*Adjustments made for:

Guidance: 2024: Sales EUR 100m; EBIT positive

Financial Ratios

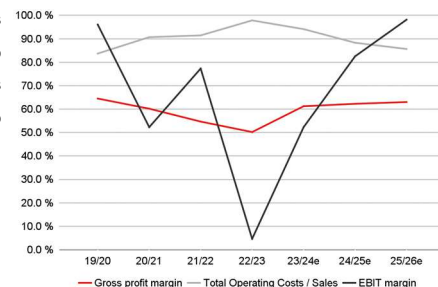
	2019/20	2020/21	2021/22	2022/23	2023/24e	2024/25e	2025/26e
Total Operating Costs / Sales	83.7 %	90.7 %	91.4 %	97.9 %	94.1 %	88.3 %	85.7 %
Operating Leverage	4.1 x	-4.3 x	2395.4 x	n.a.	n.a.	203.9 x	6.4 x
EBITDA / Interest expenses	32.2 x	12.3 x	8.0 x	0.2 x	3.2 x	8.7 x	14.5 x
Tax rate (EBT)	28.2 %	-635.7 %	35.9 %	-2.5 %	29.0 %	29.0 %	29.0 %
Dividend Payout Ratio	49.9 %	n.m.	0.0 %	0.0 %	n.m.	49.3 %	43.6 %
Sales per Employee	160,472	175,297	176,971	181,471	168,631	185,010	190,791

Sales, EBITDA
in EUR m



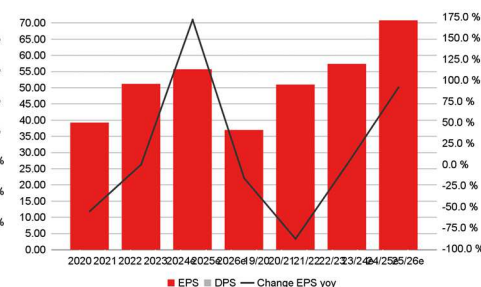
Source: Warburg Research

Operating Performance
in %



Source: Warburg Research

Performance per Share



Source: Warburg Research

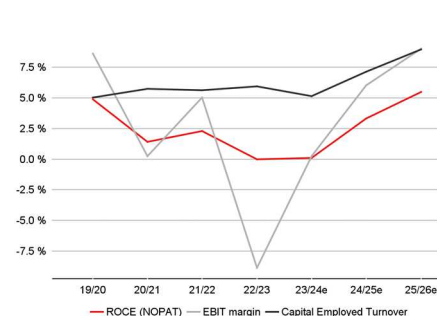
Consolidated balance sheet

In EUR m	2019/20	2020/21	2021/22	2022/23	2023/24e	2024/25e	2025/26e
Assets							
Goodwill and other intangible assets	21.0	24.0	23.3	19.7	19.4	19.2	18.9
thereof other intangible assets	2.2	2.9	2.1	1.3	1.0	0.8	0.5
thereof Goodwill	18.8	21.1	21.1	18.4	18.4	18.4	18.4
Property, plant and equipment	76.8	87.8	79.6	75.1	73.3	73.0	72.5
Financial assets	1.1	1.1	1.1	1.0	1.0	1.0	1.0
Other long-term assets	0.0	0.0	0.0	0.0	0.0	0.0	0.0
Fixed assets	99.0	112.9	103.9	95.8	93.8	93.2	92.4
Inventories	35.2	46.7	46.4	35.0	33.7	34.7	34.9
Accounts receivable	14.3	17.1	19.7	15.6	15.5	17.6	19.4
Liquid assets	34.2	12.1	7.1	9.3	3.3	0.7	11.7
Other short-term assets	13.6	14.1	18.4	20.3	18.8	17.3	15.8
Current assets	97.2	90.0	91.6	80.3	71.3	70.3	81.8
Total Assets	196.2	202.9	195.5	176.2	165.1	163.5	174.3
Liabilities and shareholders' equity							
Subscribed capital	6.1	6.1	6.1	6.1	6.1	6.1	6.1
Capital reserve	42.0	42.0	42.0	42.0	42.0	42.0	42.0
Retained earnings	68.3	62.7	58.8	47.8	46.5	49.0	54.0
Other equity components	0.0	0.0	0.0	0.0	0.0	0.0	0.0
Shareholders' equity	116.3	110.7	106.9	95.8	94.5	97.1	102.0
Minority interest	0.3	0.4	0.4	0.3	0.3	0.3	0.3
Total equity	116.7	111.1	107.2	96.1	94.8	97.4	102.3
Provisions	9.5	9.3	4.7	3.6	3.6	3.6	3.6
thereof provisions for pensions and similar obligations	8.8	8.6	4.0	3.2	3.2	3.2	3.2
Financial liabilities (total)	46.3	53.5	59.4	56.8	47.6	42.6	47.6
Short-term financial liabilities	3.5	3.9	26.4	12.4	0.0	0.0	0.0
Accounts payable	6.5	9.4	10.3	7.6	7.0	7.9	8.7
Other liabilities	17.3	19.5	13.8	12.1	12.1	12.1	12.1
Liabilities	79.5	91.8	88.2	80.0	70.3	66.2	72.0
Total liabilities and shareholders' equity	196.2	202.9	195.5	176.2	165.1	163.5	174.3

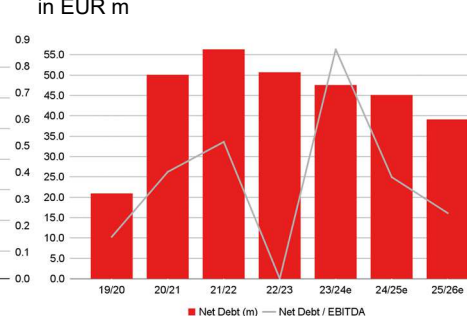
Financial Ratios

	2019/20	2020/21	2021/22	2022/23	2023/24e	2024/25e	2025/26e
Efficiency of Capital Employment							
Operating Assets Turnover	0.8 x	0.8 x	0.9 x	0.9 x	0.9 x	1.0 x	1.0 x
Capital Employed Turnover	0.7 x	0.7 x	0.7 x	0.7 x	0.7 x	0.8 x	0.9 x
ROA	5.8 %	-4.3 %	-12.9 %	-11.6 %	-1.4 %	3.7 %	7.3 %
Return on Capital							
ROCE (NOPAT)	4.9 %	1.4 %	2.3 %	n.a.	0.1 %	3.3 %	5.5 %
ROE	5.6 %	-4.3 %	-12.3 %	-11.0 %	-1.4 %	3.6 %	6.8 %
Adj. ROE	5.6 %	2.4 %	-6.9 %	5.3 %	-1.4 %	3.6 %	6.8 %
Balance sheet quality							
Net Debt	20.9	50.1	56.3	50.7	47.6	45.1	39.1
Net Financial Debt	12.1	41.5	52.3	47.5	44.3	41.9	35.9
Net Gearing	17.9 %	45.1 %	52.5 %	52.7 %	50.2 %	46.3 %	38.2 %
Net Fin. Debt / EBITDA	82.4 %	300.7 %	431.5 %	n.a.	726.9 %	320.8 %	204.4 %
Book Value / Share	19.2	18.3	17.6	15.8	15.6	16.0	16.8
Book value per share ex intangibles	15.7	14.3	13.8	12.6	12.4	12.9	13.7

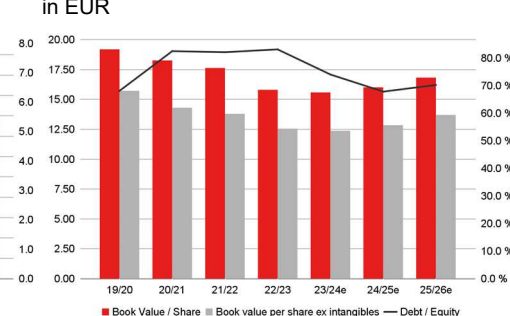
ROCE Development



Net debt in EUR m



Book Value per Share in EUR



Source: Warburg Research

Source: Warburg Research

Source: Warburg Research

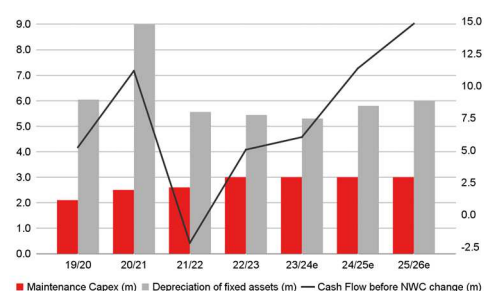
Consolidated cash flow statement

In EUR m	2019/20	2020/21	2021/22	2022/23	2023/24e	2024/25e	2025/26e
Net income	5.8	-4.9	-13.4	-11.1	-1.3	3.5	6.7
Depreciation of fixed assets	6.0	9.0	5.6	5.4	5.3	5.8	6.0
Amortisation of goodwill	0.0	3.4	0.0	2.6	0.0	0.0	0.0
Amortisation of intangible assets	0.6	1.1	0.7	1.8	0.6	0.6	0.6
Increase/decrease in long-term provisions	0.3	0.4	-0.2	-0.8	0.0	0.0	0.0
Other non-cash income and expenses	-7.5	2.1	5.1	7.2	1.5	1.5	1.5
Cash Flow before NWC change	5.2	11.2	-2.2	5.1	6.0	11.4	14.8
Increase / decrease in inventory	0.6	-12.5	-11.6	-1.8	1.3	-1.0	-0.2
Increase / decrease in accounts receivable	2.7	-1.3	-2.7	0.7	0.1	-2.1	-1.8
Increase / decrease in accounts payable	-1.2	3.6	0.8	-0.9	-0.6	0.9	0.8
Increase / decrease in other working capital positions	0.0	0.0	0.0	0.0	0.0	0.0	0.0
Increase / decrease in working capital (total)	2.2	-10.2	-13.5	-1.9	0.9	-2.2	-1.2
Net cash provided by operating activities [1]	7.4	0.9	-15.7	3.1	6.9	9.2	13.6
Investments in intangible assets	-0.3	-0.2	-0.1	-1.0	-0.3	-0.3	-0.3
Investments in property, plant and equipment	-35.1	-16.9	-5.2	-4.1	-3.5	-5.5	-5.5
Payments for acquisitions	-0.2	-7.7	0.0	0.0	0.0	0.0	0.0
Financial investments	0.0	0.0	0.0	0.0	0.0	0.0	0.0
Income from asset disposals	0.0	0.2	2.7	5.5	0.0	0.0	0.0
Net cash provided by investing activities [2]	-30.4	-24.6	-1.7	2.6	-3.8	-5.8	-5.8
Change in financial liabilities	21.9	4.3	4.9	-3.3	-9.2	-5.0	5.0
Dividends paid	-4.4	-3.0	-1.2	-0.1	0.0	-0.9	-1.8
Purchase of own shares	0.0	0.0	0.0	0.0	0.0	0.0	0.0
Capital measures	25.7	0.0	0.0	0.0	0.0	0.0	0.0
Other	0.1	0.0	0.0	0.0	0.0	0.0	0.0
Net cash provided by financing activities [3]	43.3	1.2	3.7	-3.4	-9.2	-5.9	3.2
Change in liquid funds [1]+[2]+[3]	20.3	-22.5	-13.6	2.3	-6.1	-2.6	11.0
Effects of exchange-rate changes on cash	-0.1	0.0	0.4	-0.2	0.0	0.0	0.0
Cash and cash equivalent at end of period	34.7	11.7	-1.1	9.2	3.3	0.7	11.7

Financial Ratios

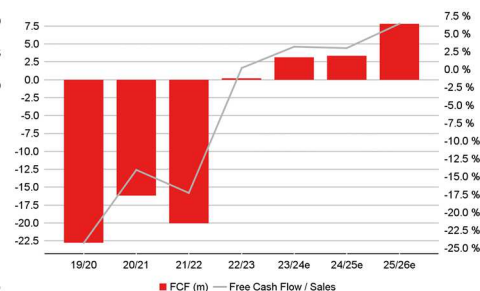
	2019/20	2020/21	2021/22	2022/23	2023/24e	2024/25e	2025/26e
Cash Flow							
FCF	-22.8	-16.2	-20.0	0.2	3.1	3.4	7.8
Free Cash Flow / Sales	-24.2 %	-14.0 %	-17.3 %	0.2 %	3.2 %	3.0 %	6.4 %
Free Cash Flow Potential	10.0	6.6	-0.6	-3.8	3.6	8.6	11.7
Free Cash Flow / Net Profit	-393.9 %	331.2 %	150.0 %	-1.8 %	-235.7 %	96.2 %	115.8 %
Interest Received / Avg. Cash	0.8 %	0.6 %	0.7 %	2.4 %	0.0 %	0.0 %	0.0 %
Interest Paid / Avg. Debt	1.5 %	2.2 %	2.7 %	3.1 %	3.6 %	3.3 %	2.7 %
Management of Funds							
Investment ratio	37.7 %	14.8 %	4.5 %	4.8 %	3.9 %	5.2 %	4.7 %
Maint. Capex / Sales	2.2 %	2.2 %	2.2 %	2.8 %	3.1 %	2.7 %	2.5 %
Capex / Dep	535.7 %	126.5 %	83.8 %	51.8 %	64.8 %	91.1 %	88.3 %
Avg. Working Capital / Sales	45.3 %	40.2 %	44.9 %	44.4 %	41.9 %	37.5 %	35.5 %
Trade Debtors / Trade Creditors	219.7 %	180.9 %	191.0 %	206.6 %	221.4 %	222.8 %	223.0 %
Inventory Turnover	0.9 x	1.0 x	1.2 x	1.5 x	1.1 x	1.2 x	1.3 x
Receivables collection period (days)	55	54	62	54	58	58	58
Payables payment period (days)	72	70	69	54	67	69	70
Cash conversion cycle (Days)	358	309	284	238	296	276	256

CAPEX and Cash Flow in EUR m



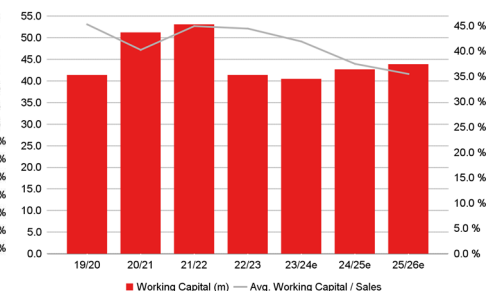
Source: Warburg Research

Free Cash Flow Generation



Source: Warburg Research

Working Capital



Source: Warburg Research

LEGAL DISCLAIMER

This research report ("investment recommendation") was prepared by the Warburg Research GmbH, a fully owned subsidiary of the M.M.Warburg & CO (AG & Co.) KGaA and is passed on by the M.M.Warburg & CO (AG & Co.) KGaA. It is intended solely for the recipient and may not be passed on to another company without their prior consent, regardless of whether the company is part of the same corporation or not. It contains selected information and does not purport to be complete. The investment recommendation is based on publicly available information and data ("information") believed to be accurate and complete. Warburg Research GmbH neither examines the information for accuracy and completeness, nor guarantees its accuracy and completeness. Possible errors or incompleteness of the information do not constitute grounds for liability of M.M.Warburg & CO (AG & Co.) KGaA or Warburg Research GmbH for damages of any kind whatsoever, and M.M.Warburg & CO (AG & Co.) KGaA and Warburg Research GmbH are not liable for indirect and/or direct and/or consequential damages. In particular, neither M.M.Warburg & CO (AG & Co.) KGaA nor Warburg Research GmbH are liable for the statements, plans or other details contained in these investment recommendations concerning the examined companies, their affiliated companies, strategies, economic situations, market and competitive situations, regulatory environment, etc. Although due care has been taken in compiling this investment recommendation, it cannot be excluded that it is incomplete or contains errors. M.M.Warburg & CO (AG & Co.) KGaA and Warburg Research GmbH, their shareholders and employees are not liable for the accuracy and completeness of the statements, estimations and the conclusions derived from the information contained in this investment recommendation. Provided a investment recommendation is being transmitted in connection with an existing contractual relationship, i.e. financial advisory or similar services, the liability of M.M.Warburg & CO (AG & Co.) KGaA and Warburg Research GmbH shall be restricted to gross negligence and wilful misconduct. In case of failure in essential tasks, M.M.Warburg & CO (AG & Co.) KGaA and Warburg Research GmbH are liable for normal negligence. In any case, the liability of M.M.Warburg & CO (AG & Co.) KGaA and Warburg Research GmbH is limited to typical, expectable damages. This investment recommendation does not constitute an offer or a solicitation of an offer for the purchase or sale of any security. Partners, directors or employees of M.M.Warburg & CO (AG & Co.) KGaA, Warburg Research GmbH or affiliated companies may serve in a position of responsibility, i.e. on the board of directors of companies mentioned in the report. Opinions expressed in this investment recommendation are subject to change without notice. The views expressed in this research report accurately reflect the research analyst's personal views about the subject securities and issuers. Unless otherwise specified in the research report, no part of the research analyst's compensation was, is, or will be directly or indirectly related to the specific recommendations or views contained in the research report. All rights reserved.

COPYRIGHT NOTICE

This work including all its parts is protected by copyright. Any use beyond the limits provided by copyright law without permission is prohibited and punishable. This applies, in particular, to reproductions, translations, microfilming, and storage and processing on electronic media of the entire content or parts thereof.

DISCLOSURE ACCORDING TO §85 OF THE GERMAN SECURITIES TRADING ACT (WPHG), MAR AND MIFID II INCL. COMMISSION DELEGATED REGULATION (EU) 2016/958 AND (EU) 2017/565

The valuation underlying the investment recommendation for the company analysed here is based on generally accepted and widely used methods of fundamental analysis, such as e.g. DCF Model, Free Cash Flow Value Potential, NAV, Peer Group Comparison or Sum of the Parts Model (see also <http://www.mmwarburg.de/disclaimer/disclaimer.htm#Valuation>). The result of this fundamental valuation is modified to take into consideration the analyst's assessment as regards the expected development of investor sentiment and its impact on the share price.

Independent of the applied valuation methods, there is the risk that the price target will not be met, for instance because of unforeseen changes in demand for the company's products, changes in management, technology, economic development, interest rate development, operating and/or material costs, competitive pressure, supervisory law, exchange rate, tax rate etc. For investments in foreign markets and instruments there are further risks, generally based on exchange rate changes or changes in political and social conditions.

This commentary reflects the opinion of the relevant author at the point in time of its compilation. A change in the fundamental factors underlying the valuation can mean that the valuation is subsequently no longer accurate. Whether, or in what time frame, an update of this commentary follows is not determined in advance.

Additional internal and organisational arrangements to prevent or to deal with conflicts of interest have been implemented. Among these are the spatial separation of Warburg Research GmbH from M.M.Warburg & CO (AG & Co.) KGaA and the creation of areas of confidentiality. This prevents the exchange of information, which could form the basis of conflicts of interest for Warburg Research GmbH in terms of the analysed issuers or their financial instruments.

The analysts of Warburg Research GmbH do not receive a gratuity – directly or indirectly – from the investment banking activities of M.M.Warburg & CO (AG & Co.) KGaA or of any company within the Warburg-Group.

All prices of financial instruments given in this investment recommendation are the closing prices on the last stock-market trading day before the publication date stated, unless another point in time is explicitly stated.

M.M.Warburg & CO (AG & Co.) KGaA and Warburg Research GmbH are subject to the supervision of the Federal Financial Supervisory Authority, BaFin. M.M.Warburg & CO (AG & Co.) KGaA is additionally subject to the supervision of the European Central Bank (ECB).

SOURCES

All **data and consensus estimates** have been obtained from FactSet except where stated otherwise.

The **Warburg ESG Risk Score** is based on information © 2020 MSCI ESG Research LLC. Reproduced by permission. Although Warburg Research's information providers, including without limitation, MSCI ESG Research LLC and its affiliates (the "ESG Parties"), obtain information (the "Information") from sources they consider reliable, none of the ESG Parties warrants or guarantees the originality, accuracy and/or completeness, of any data herein and expressly disclaim all express or implied warranties, including those of merchantability and fitness for a particular purpose. The Information may only be used for your internal use, may not be reproduced or disseminated in any form and may not be used as a basis for, or a component, of any financial instruments or products indices. Further, none of the Information can in and of itself be used to determine which securities to buy or sell or when to buy or sell them. None of the ESG Parties shall have any liability for any errors or omissions in connection with any data herein, or any liability for any direct, indirect, special, punitive, consequential or any other damage (including lost profits) even if notified of the possibility.

Additional information for clients in the United States

1. This research report (the "Report") is a product of Warburg Research GmbH, Germany, a fully owned subsidiary of M.M.Warburg & CO (AG & Co.) KGaA, Germany (in the following collectively "Warburg"). Warburg is the employer of the research analyst(s), who have prepared the Report. The research analyst(s) reside outside the United States and are not associated persons of any U.S. regulated broker-dealer and therefore are not subject to the supervision of any U.S. regulated broker-dealer.
2. The Report is provided in the United States for distribution solely to "major U.S. institutional investors" under Rule 15a-6 of the U.S. Securities Exchange Act of 1934 by CIC.
3. CIC (Crédit Industriel et Commercial) and M.M. Warburg & CO have concluded a Research Distribution Agreement that gives CIC Market Solutions exclusive distribution in France, the US and Canada of the Warburg Research GmbH research product.
4. The research reports are distributed in the United States of America by CIC ("CIC") pursuant to a SEC Rule 15a-6 agreement with CIC Market Solutions Inc ("CICI"), a U.S. registered broker-dealer and a related company of CIC, and are distributed solely to persons who qualify as "Major U.S. Institutional Investors" as defined in SEC Rule 15a-6 under the Securities Exchange Act of 1934.
5. Any person who is not a Major U.S. Institutional Investor must not rely on this communication. The delivery of this research report to any person in the United States of America is not a recommendation to effect any transactions in the securities discussed herein, or an endorsement of any opinion expressed herein.

Reference in accordance with section 85 of the German Securities Trading Act (WpHG) and Art. 20 MAR regarding possible conflicts of interest with companies analysed:

- 1- Warburg Research, or an affiliated company, or an employee of one of these companies responsible for the compilation of the research, hold a **share of more than 5%** of the equity capital of the analysed company.
- 2- Warburg Research, or an affiliated company, within the last twelve months participated in the **management of a consortium** for an issue in the course of a public offering of such financial instruments, which are, or the issuer of which is, the subject of the investment recommendation.
- 3- Companies affiliated with Warburg Research **manage financial instruments**, which are, or the issuers of which are, subject of the investment recommendation, in a market based on the provision of buy or sell contracts.
- 4- MMWB, Warburg Research, or an affiliated company, reached an agreement with the issuer to provide **investment banking and/or investment services** and the relevant agreement was in force in the last 12 months or there arose for this period, based on the relevant agreement, the obligation to provide or to receive a service or compensation - provided that this disclosure does not result in the disclosure of confidential business information.
- 5- The company compiling the analysis or an affiliated company had reached an **agreement on the compilation of the investment recommendation** with the analysed company.
- 6a- Warburg Research, or an affiliated company, holds a **net long position of more than 0.5%** of the total issued share capital of the analysed company.
- 6b- Warburg Research, or an affiliated company, holds a **net short position of more than 0.5%** of the total issued share capital of the analysed company.
- 6c- The issuer holds shares of more than 5% of the total issued capital of Warburg Research or an affiliated company.
- 7- The company preparing the analysis as well as its affiliated companies and employees have **other important interests** in relation to the analysed company, such as, for example, the exercising of mandates at analysed companies.

This report has been made accessible to the company analysed.

Company	Disclosure	Link to the historical price targets and rating changes (last 12 months)
Dr. Hönle	3, 5	https://www.mmwarburg.com/disclaimer/disclaimer_en/DE0005157101.htm

INVESTMENT RECOMMENDATION

Investment recommendation: expected direction of the share price development of the financial instrument up to the given price target in the opinion of the analyst who covers this financial instrument.

-B-	Buy:	The price of the analysed financial instrument is expected to rise over the next 12 months.
-H-	Hold:	The price of the analysed financial instrument is expected to remain mostly flat over the next 12 months.
-S-	Sell:	The price of the analysed financial instrument is expected to fall over the next 12 months.
“-“	Rating suspended:	The available information currently does not permit an evaluation of the company.

WARBURG RESEARCH GMBH – ANALYSED RESEARCH UNIVERSE BY RATING

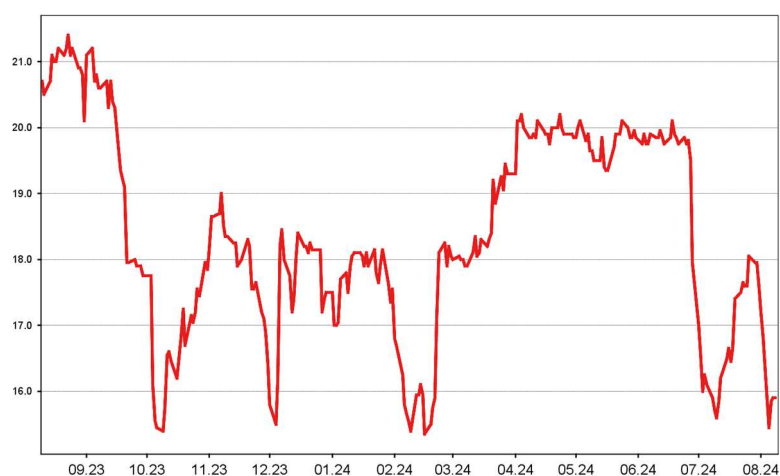
Rating	Number of stocks	% of Universe
Buy	139	69
Hold	45	22
Sell	11	5
Rating suspended	6	3
Total	201	100

WARBURG RESEARCH GMBH – ANALYSED RESEARCH UNIVERSE BY RATING ...

... taking into account only those companies which were provided with major investment services in the last twelve months.

Rating	Number of stocks	% of Universe
Buy	41	75
Hold	10	18
Sell	2	4
Rating suspended	2	4
Total	55	100

PRICE AND RATING HISTORY DR. HÖNLE AS OF 09.08.2024



Markings in the chart show rating changes by Warburg Research GmbH in the last 12 months. Every marking details the date and closing price on the day of the rating change.

EQUITIES

Matthias Rode +49 40 3282-2678
Head of Equities mrode@mmwarburg.com

RESEARCH

Michael Heider +49 40 309537-280
Head of Research mheider@warburg-research.com

Henner Rüschemeyer +49 40 309537-270
Head of Research hrueschmeier@warburg-research.com

Stefan Augustin +49 40 309537-168
Cap. Goods, Engineering saugustin@warburg-research.com

Jan Bauer +49 40 309537-155
Renewables jbauer@warburg-research.com

Christian Cohrs +49 40 309537-175
Industrials & Transportation ccohrs@warburg-research.com

Dr. Christian Ehmann +49 40 309537-167
BioTech, Life Science cehmann@warburg-research.com

Felix Ellmann +49 40 309537-120
Software, IT fellmann@warburg-research.com

Jörg Philipp Frey +49 40 309537-258
Retail, Consumer Goods jfrey@warburg-research.com

Marius Fuhrberg +49 40 309537-185
Financial Services mfuhrberg@warburg-research.com

Fabio Hölscher +49 40 309537-240
Automobiles, Car Suppliers fhoelscher@warburg-research.com

Philipp Kaiser +49 40 309537-260
Real Estate, Construction pkaiser@warburg-research.com

Thilo Kleibauer +49 40 309537-257
Retail, Consumer Goods tkleibauer@warburg-research.com

Hannes Müller +49 40 309537-255
Software, IT hmueller@warburg-research.com

Andreas Pläsier +49 40 309537-246
Banks, Financial Services aplaesier@warburg-research.com

Malte Schaumann +49 40 309537-170
Technology mschaumann@warburg-research.com

Oliver Schwarz +49 40 309537-250
Chemicals, Agriculture oschwarz@warburg-research.com

Simon Stippig +49 40 309537-265
Real Estate, Telco sstippig@warburg-research.com

Marc-René Tonn +49 40 309537-259
Automobiles, Car Suppliers mtonn@warburg-research.com

Robert-Jan van der Horst +49 40 309537-290
Technology rvanderhorst@warburg-research.com

Andreas Wolf +49 40 309537-140
Software, IT awolf@warburg-research.com

INSTITUTIONAL EQUITY SALES

Klaus Schilling +49 69 5050-7400
Head of Equity Sales, Germany kschilling@mmwarburg.com

Tim Beckmann +49 40 3282-2665
United Kingdom tbeckmann@mmwarburg.com

Jens Buchmüller +49 69 5050-7415
Scandinavia, Austria jbuchmueller@mmwarburg.com

Matthias Fritsch +49 40 3282-2696
United Kingdom, Ireland mfritsch@mmwarburg.com

Rudolf Alexander Michaelis +49 40 3282-2649
Germany rmichaelis@mmwarburg.com

Roman Alexander Niklas +49 69 5050-7412
Switzerland, Poland rniklas@mmwarburg.com

Sascha Propp +49 40 3282-2656
France spropp@mmwarburg.com

Antonia Möller +49 69 5050-7417
Roadshow/Marketing amoeller@mmwarburg.com

Charlotte Wernicke +49 40 3282-2669
Roadshow/Marketing cwernicke@mmwarburg.com

Juliane Niemann +49 40 3282-2694
Roadshow/Marketing jniemann@mmwarburg.com

SALES TRADING

Oliver Merckel +49 40 3282-2634
Head of Sales Trading omerckel@mmwarburg.com

Rico Müller +49 40 3282-2685
Sales Trading rmueller@mmwarburg.com

Bastian Quast +49 40 3282-2701
Sales Trading bqast@mmwarburg.com

DESIGNATED SPONSORING

Marcel Magiera +49 40 3282-2662
Designated Sponsoring mmagiera@mmwarburg.com

Sebastian Schulz +49 40 3282-2631
Designated Sponsoring sschulz@mmwarburg.com

Jörg Treptow +49 40 3282-2658
Designated Sponsoring jtreptow@mmwarburg.com

MACRO RESEARCH

Carsten Klude +49 40 3282-2572
Macro Research cklude@mmwarburg.com

Dr. Christian Jasperneite +49 40 3282-2439
Investment Strategy cjasperneite@mmwarburg.com

Our research can be found under:

Warburg Research research.mmwarburg.com/en/index.html
Bloomberg RESP MMWA GO
FactSet www.factset.com

LSEG www.lseg.com
Capital IQ www.capitaliq.com

For access please contact:

Andrea Schaper +49 40 3282-2632
Sales Assistance aschaper@mmwarburg.com

Kerstin Muthig +49 40 3282-2703
Sales Assistance kmuthig@mmwarburg.com